



Visual Guide

This information is designed to help you prepare for a visit to **Lower Moor Nature Reserve**.

General Information



Lower Moor nature reserve is located in the north of Wiltshire, close to the village of Oaksey.

The site is managed by Wiltshire Wildlife Trust.

The reserve has three lakes, two brooks, ponds and wetland scrapes.



The reserve complex is 126.18 hectares.

There is access for wheelchairs or pushchairs from the car park to the cafe and parts of the reserve.

There are toilet facilities at the cafe.

Dogs are allowed on site if kept on a lead.

Getting there



The reserve can be accessed by car, bike and the number 93 bus.

From Cricklade, drive northwards on A419, then turn left onto B4696 towards Somerford Keynes. Continue straight over crossroads and then for a further 2.5 miles until you see the entrance on left. The postcode is SN16 9TW.



The car park is large and has space for lots of vehicles. There is signage and a site map in the car park.



There are 4 accessible parking bays near the entrance to the cafe.

Exploring Lower Moor



Enter the reserve by following the path and arrows to the cafe from the car park.



The path is flat.

There is a circular walk which loops around the nature reserve. It is easy to follow the path around.

Allow at least 1 hour to complete the loop. There are plenty of resting points at benches on the way.



The nature reserve is in a quiet area - the only noise being the occasional plane which flies overhead.

Download a reserve leaflet for further information:
<https://bit.ly/3yNXJwj>

Toilet facilities



There are toilets for men, women and a disabled toilet with baby changing facilities at the Dragonfly Cafe.



These are accessed via a ramp.

Dragonfly Cafe



Following the path from the car park towards the reserve entrance, you will find the Dragonfly Cafe.

This includes an accessible ramp onto a decked veranda with shelter, with ample seating both inside and outside.



There are wonderful views across the lake from the veranda.

Once seated, staff will be happy to take your order.

The till is located on a table indoors.

DRINKS	
ESPRESSO	£ 2.25
AMERICANO	£ 2.80
LATTE	£ 3.10
CAPPUCCINO	£ 3.10
FLAT WHITE	£ 3.10
MOCHA	£ 3.40
MACCHIATO	£ 3.00
= SOYA . OAT . ALMOND ^{SOP} MILK AVAILABLE	
COLD / HOT CHOCOLATE	£ 3.10
TEA	
HOUSE BLEND	£ 2.25
SUMMER FIELDS - Peppermint	£ 2.80
EARL GREY & ROSE PETAL	£ 2.80
ORCHARD APPLE JUICE	
GLASS	£ 1.25
BOTTLE (750ml)	£ 3.75
• DECAFF. TEA + COFFEE AVAIL.	

EXTRA SHOT SOP

ICED LATTE £3.10

Food and drinks are served at the cafe from 10 til 4 Wednesdays to Sundays.

The menu will look like this, written on chalk boards on the veranda. Cakes, coffees and sandwiches are served here.

Continuing the walk



Following the path past the cafe, the path narrows and can be muddy in winter. This path is too narrow for wheelchair users.



In total there are 3 bird hides to explore along the way. Information leaflets can be found inside the hides as well as identification posters of the wildlife to be found there. Cottage Lake hide is accessible for wheelchair users.



Children are welcome to leave drawings of their sightings on the notice boards inside.

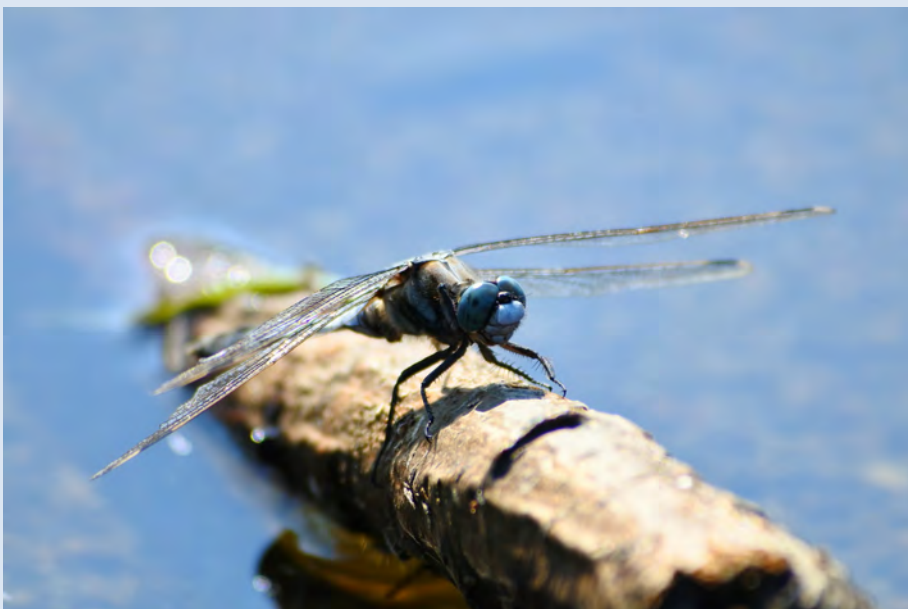
Wildlife



Large populations of wildfowl swim in the lakes - great crested grebe, teal, shoveler duck and goosander to name a few. It's also common to spot a heron and cormorants.



Water voles and otters can also be seen if you're lucky!



On sunny days see if you can spot the emperor, southern hawker and downy emerald dragonflies.