

A sustainable future for wildlife and people

Wiltshire Wildlife Trust 2022-23

# Impact Report



Photo: Brown trout, Alexander Mustard-2020VISION



# Foreword



The impact report you will read on the following pages is a snapshot of the wide ranging outcomes that our staff, volunteers and supporters deliver across Wiltshire. We celebrated a number of milestones last year, including our 60th Anniversary year, securing the largest ever grant

we have received to support the acquisition of Great Wood, an ancient woodland near Brinkworth, as well as running the first market for biodiversity credits in Wiltshire thanks to the Government's Green Recovery Challenge Fund.

Wiltshire Wildlife Trust would not be what it is today without the leadership of our outgoing CEO, Gary Mantle, who is now retiring after 33 years. Suffice to say that as you read through this report, many of the areas of impact are because of Gary's foresight and ability to create partnerships and secure funding for so many projects. Highlights have included the creation of the Care Farms, which have been continuing to support young people in Wiltshire, as well as the acquisition of some of Wiltshire's and the UK's top sites for wildlife, such as the ancient hay meadows at Clattinger Farm. We all owe him a huge thank you.

Our new strategy 'A Wilder Wiltshire' gives us a clear direction for the next seven years and with our new Chief Executive, Jo Lewis, who joins us from the Soil Association, we have a leader to steer us through this period with focus, creativity and determination.

Behind the outward facing activities, there is a very important function that can sometimes be overlooked; Louise Hale leads a small but essential Business and Finance Team in the Trust. It is thanks to Louise and her team that we are able to present this report and the annual accounts that sit behind it.

You will see that the Trust's financial health is solid, although we are not immune to the challenges that inflation brings. I am pleased to say that our membership remains healthy and that we are growing the number of our volunteers across many projects.

I would like to finish by saying a huge thank you to everyone who has supported the Trust over the past 12 months. Your support has been essential in delivering a Wilder Wiltshire and you should feel pride in what we have achieved.

**Mark Street**  
Chairman

## Wiltshire Wildlife Trust Limited

### Patron

Robert Floyd

### Ambassador

Professor Sir John Lawton

### Trustees

Mark Street (Chair)

Martyn Allez

Julian Barlow

Charlie Fattorini

Tim Gilson

Fiona Goff

Matt Jolley

Peter Luck (Treasurer, retired)

Piers Maynard

Cora Pfarre

Sylvia Wyatt

### Chief Executive

Dr Gary Mantle MBE (retired)

### Professional advisors

Stephens Scown - human resources and legal

Saffery Champness - VAT

Sumer Auditco Ltd - auditors

Chapel Health and Safety

Savills - rural consultants

## Review by the Trustees

The Trustees present their review and summary financial statements for the year ended 31 March 2023.

The Trust is a company limited by guarantee incorporated in England and is governed by its Memorandum and Articles of Association. It is also a charity registered in England. It is subject to both the Companies Act and the Charities Act. The Trust is governed by a board of trustees known as Council who are elected by the Trust's members. The trustees are the directors of the company for Companies Act purposes. The Trust's Memorandum of Association sets out its objects, which may be summarised as the promotion of wildlife and its habitats and places of natural beauty, interest or value, particularly to further biodiversity; to protect the environment, particularly by reference to sustainable development and recycling waste; and to advance the education of the public in such areas.

The Trust is a corporate member of the Royal Society of Wildlife Trusts. This consists of 46 Wildlife Trusts across the British Isles, working towards a common vision of *'a thriving natural world, with our wildlife and natural habitats playing a valued role in addressing the climate and ecological emergencies and everyone inspired to get involved in nature's recovery'*. The Trust is a member of South West Wildlife Trusts Limited, a charity whose objectives are primarily to promote biodiversity and environmental policy in the south west on a regional basis and to strengthen the individual Wildlife Trusts' capacity in their activities by acting as a combined force where appropriate.



Registered Office  
Elm Tree Court,  
Long Street, Devizes,  
Wiltshire SN10 1NJ  
Tel: 01380 725670

[www.wiltshirewildlife.org](http://www.wiltshirewildlife.org)

Registered Charity Number 266202  
Company Registration Number 730536



# A word from our Chief Executive...

Welcome to this report of 2022/23, and my final introduction as CEO of the Trust. Despite the challenges facing us all today, I hope that this impact report and our new seven-year strategy shows what can be achieved and gives you a sense of optimism for the future.

A key goal in our 'Wilder Wiltshire' strategy is to get nature and climate at the heart of decision making. This past year, the Trust has taken a more proactive approach to campaigning, setting out the urgent actions and leadership needed from Government to tackle the biodiversity and climate crises; from increasing incentives for farmers, to retaining vital environmental protections from EU law. Thanks to everyone who joined in the national 'Defend Nature' campaign. The battle isn't won yet and the Trust will continue to press the Government to deliver on its climate and nature commitments.

We will also continue to lead by example. We have committed to doubling the land we manage for nature by 2030, and have made great strides towards achieving this goal by purchasing Great Wood, 175 acres of ancient woodland. A big thanks to Biffa Award, The Underwood Trust, and everyone who contributed to this magnificent achievement. I look forward to hearing how nature bounces back in the woodland over the coming years.

Achieving nature's recovery is an ongoing struggle, but one that brings immense satisfaction and fulfilment when it can be seen in action. From the creation and enhancement of wetland habitats at Landford Bog, Langford Lakes and Lower Moor Farm, to the planting of trees in Swindon and at Green Lane Wood and Mill Farm, the long-term benefits for our

local wildlife will be profound.

We have also expanded the reach of our Care Farms, increased nature connectedness among participants on our wellbeing programmes and run more outdoor family events than ever before. These will all help us achieve our goal of getting 1 in 4 people taking meaningful action for nature and benefitting from having nature in their lives by 2030.

Despite the many uncertainties and challenges still facing us, I retire as CEO confident that the Trust and its supporters can achieve our shared vision of a sustainable future for wildlife and people. I now pass on the rewarding work of guiding nature's recovery across our beautiful county to Jo Lewis, and give my sincere thanks to the extraordinary staff, trustees, volunteers, members and donors who have helped the Trust achieve so much over the years. I'd also like to thank The Hills Group for their unswerving support throughout my 33 years at the helm.

It has been a privilege and a joy to dedicate my life to this worthy cause, and I look forward to seeing what comes next.



**Dr Gary Mantle MBE**  
**Chief Executive**



# New strategy: Creating a Wilder Wiltshire

We face an ecological and climate emergency that is already impacting the three pillars of sustainable living: nature, people and our economy. We want to see an increased abundance of nature, experienced by people in their daily lives. This spring, we launched our new seven-year strategy, which builds on our achievements to restore nature rapidly at scale, and inspire people to live more sustainably. Our goals are:

## 1. Nature will be in recovery

By 2030, Wiltshire and Swindon's habitats, species and natural processes will be in recovery and 30% of land will be managed for nature. To achieve this, we will lead by example by:

- Doubling the area of land owned and managed by the Trust to 2,400 hectares.
- Restoring species abundance and diversity across Wiltshire and Swindon.
- Restoring natural processes on our land and in rivers.



## 2. People will be taking action

By 2030, people will be taking informed and meaningful action for nature and the climate and benefitting from having nature in their lives. To achieve this, we will:

- Empower 1 in 4 people to take significant and transformative action for nature.
- Help improve the health and wellbeing of people through their engagement with nature.
- Provide opportunities for all children and young people in Wiltshire to experience the joy of nature and kindle a lasting interest in wild places.



## 3. Nature will be valued

By 2030, nature will play a central and valued role in helping to address local, national and global problems.

To achieve this, we will:

- Get nature and climate at the heart of decision making.
- Create and promote nature-based solutions with partners to address the climate and nature emergencies.
- Support sustainable, healthy, productive and resilient ecosystem services across Wiltshire and Swindon.



To read our strategy in full, visit: [www.wiltshirewildlife.org/strategy](http://www.wiltshirewildlife.org/strategy)

# Supporting nature's recovery

An extraordinary year for the conservation and land management team saw the conclusion of our flagship Taking Action for Insects Project (TAfI), which was funded by the Government's Green Recovery Challenge Fund, enabling us to enhance our nature reserves for invertebrates. We also delivered large-scale woodland and freshwater habitat improvement works, an agroforestry project at Mill Farm, and established two new nature reserves, Bay Meadows and Great Wood.

42  
hectares  
of meadow  
enhancement

1,223  
hectares  
managed for  
nature

32  
hectares  
of woodland  
improvement



Photo: Scarce chaser

As always, volunteers have been key to our success; thanks to the launch of a new volunteering web platform, we have been able to record everything that our volunteers have helped us to achieve for the first time. An impressive **7,944** hours have been recorded over the past year, with **1,658** volunteers attending tasks for the TAfI project alone.



Photo: Harvest mouse, Darin Smith

## Swindon

The recently extended Swindon Forest Meadows Project, a partnership with Swindon Borough Council, logged **2,748** volunteer hours during 2020-23.



Photo: Harvest mouse nest search, Tadpole Farm, WWT

Volunteers have helped the project achieve so much, including:

- The planting of new woodlands at Raybrook Meadow and Rivermead Flood Storage Area, linking to other woodland blocks to create wildlife corridors;
- The discovery of harvest mice and brown hairstreak butterflies at sites in the heart of Swindon;
- The creation of a mosaic of scrub and grassland at Mouldon Hill Country Park, allowing orchids to thrive and improving access for people to connect with nature;
- Finding a large population of water voles in Wroughton;
- Bee walks that recorded over **700 individual bumblebees of nine species.**



## North Wiltshire

We provided more habitat for pollinators such as the marsh fritillary butterfly, including Devil's-bit scabious, their larval food plant:

- Seven hectares of grassland at Echo Lodge Meadows and Avis Meadow were brush-harvested for seed;
- Four hectares of grassland at Stoke Common Meadows were harvested for green hay;
- The harvested wildflower seed and green hay were then used to improve **six 1-hectare plots** in less diverse areas at Blakehill Farm, Echo Lodge Meadows and Upper Minety Meadows.



Photo: Devil's-bit scabious at Clattinger Farm, Stephen Davis



Photo: Common blue, Maxine Stringwell



Photo: Reedbed at Langford Lakes, CainBio

## South Wiltshire

On our woodland nature reserves, **we opened up 2km of rides** for the benefit of woodland butterflies - we've recorded twice as many pearl bordered fritillaries as last year.

At Coombe Bissett Down, our work to revert cultivated land to natural grassland has continued to improve habitat for wildlife, with **invasive brome species covering 60% less area** this year.

At Langford Lakes, **900m<sup>2</sup> of reedbed has been enhanced** thanks to funding from National Highways as part of the Network for Nature programme. This work has tripled the amount of reedbed habitat for wetland invertebrates and wading birds.

Langford Bog has been greatly improved with the installation of **40 leaky dams** throughout the site. These have kept surface water on the site until June this year, much later than previously; raft spiders have been flourishing as a result.



Photo: Orchard planting, Ellie Dodson

## West Wiltshire

**60 fruit trees** were planted by volunteers at Green Lane Woods nature reserve in Trowbridge to create a new orchard. The orchard is establishing well and will soon provide free food for the local community as well as opportunities for insects, birds and mammals to forage and shelter. The planting marked the start of our new partnership with Shaw Trust, which generously funded the orchard.



Photo: Wetland scrapes at Lower Moor Farm, WWT



Photo: Balsam pulling volunteer group in Chippenham, WWT

## Water Team

The water team and conservation team have **created and restored 14 hectares of wetland** over the past year.

One of the highlights has been the completion of a wetland creation project at Lower Moor Farm nature reserve, made possible through funding from Crapper & Sons. We excavated a series of new wetland scrapes and ponds, and used the resulting gravel to create islands in Cottage Lake opposite the Dragonfly Café. These new wetland features are already attracting many amphibians, birds and mammals, some of which are threatened species.

We completed wetland scrapes at our new nature reserve Bay Meadows to provide habitat for endangered water voles, aquatic invertebrates such as dragonflies, and wading birds.

Bank regrading work on the Western Arm of the Hampshire Avon, tree planting in the headwaters of the River Wylde, and multiple woody debris projects around the county all helped slow water run off, which restores natural processes and reduces flood risk. We also delivered 19 new or restored ponds for Great Crested Newts.

Meanwhile, the Wessex Water Guardians programme went from strength to strength, with more volunteers monitoring the condition of our rivers and recording wildlife.



Photo: Mill Farm agroforestry

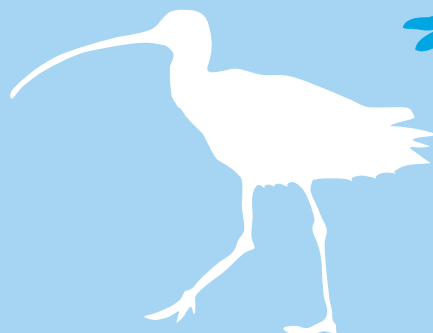
## The Bristol Avon Catchment Market

The Bristol Avon Catchment Market (BACM), a collaboration led by Wiltshire Wildlife Trust, resulted in the successful delivery of the first online biodiversity market in the UK using environmental credits. Defra's Green Recovery Challenge Fund enabled this innovative market model to demonstrate how private finance can support nature's recovery. The team have developed the market from concept to operation, and influenced the development of guidance and legislation.

Delivered projects resulted in the creation and/or enhancement of:

- **26 hectares** of agroforestry
- **25 hectares** of woodland, scrub, grassland and wetland habitats

The BACM also supported **six ecology trainees**, who were then employed as Assistant Ecologists.



**5 km  
of river  
restoration**



# Farming

Conservation grazing helps us to manage and improve habitats for wildlife, resulting in grasslands that have a greater diversity and abundance of species. The last 12 months have seen us make major improvements to our farm infrastructure, including:

- Additional livestock housing at Blakehill Farm capable of holding 30 of our cows and their calves over the winter;
- A new mobile cattle handling system that can be set up at any site across the county;
- Livestock cameras to allow us to monitor the cows during calving time;
- Cattle weighing equipment to record growth rates of our young cattle.

These improvements give us greater control, flexibility and efficiency in the way we manage our conservation grazing.



Photo: Cows, WWT



Photo: New cattle housing at Blakehill Farm, WWT

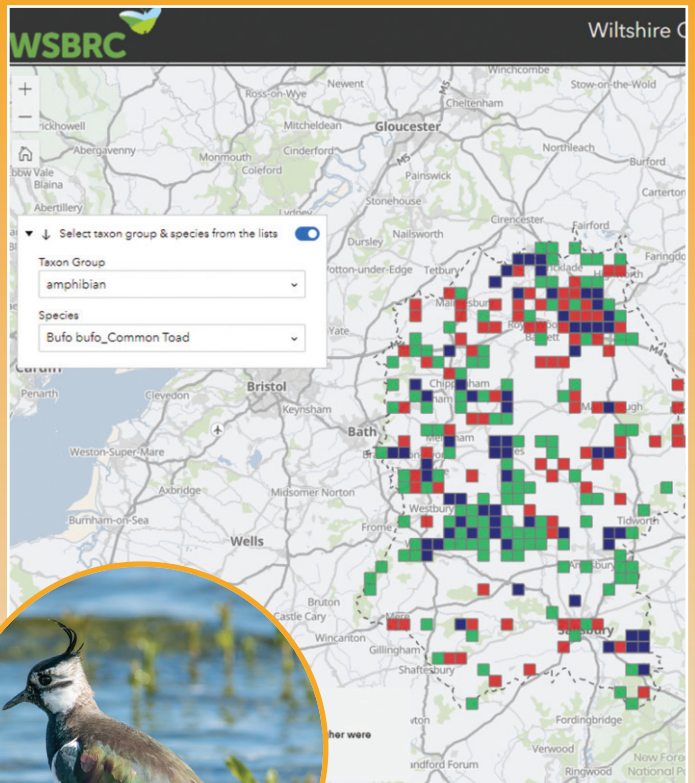
# WSBRC

**229,091 new species records** were added to the Wiltshire and Swindon Biological Records Centre (WSBRC) database, taking the total number of records to over 3.2 million. These records help us to track changes in population size and distribution, and inform projects that enhance habitats and protect threatened species.

We undertook a major project to identify and map **133 threatened species** that are critically important in Wiltshire, i.e. the species that Wiltshire has a particular responsibility to conserve and enhance. This project, funded by Natural England through the Species Recovery Programme, is vital for informing upcoming Local Nature Recovery work.

Our Ancient Woodland Inventory project, funded by Natural England, has been working with local experts to survey **1,160 hectares** of ancient woodland to date, to ensure these irreplaceable sites are protected.

Through the Nurturing Nature project, funded by Natural England, across the Cranbourne Chase AONB, we have been engaging local people and improving wildlife recording. This year, **49 training events** were undertaken with **2,483 hours** logged by **148 volunteers**.



Photos: WSBRC critical species map, Lapwing, Gary Mantle



# Inspiring and supporting people to engage with nature and live sustainably

## Adult Wellbeing

Our Wellbeing Programme in Swindon is all about connecting people with the natural world. Over the last year, we have inspired and supported participants to live more sustainably:

- Through teaching practical conservation techniques such as coppicing and hedge-laying, we helped over **70 participants** recognise the importance of supporting biodiversity and creating thriving ecosystems.
- We used Waste-Free February to raise awareness and empower individuals to make conscious choices, reducing plastic use and creating cleaner environments for humans and wildlife.

We also delivered **two 12-week wellbeing programmes** in Marlborough, funded by the Marlborough Area Board and National Lottery Heritage Fund. Participants contributed more than **220 volunteer hours** to help develop the Trust's new Bay Meadows nature reserve for the benefit of local wildlife and people.

We achieved an **87% increase in nature connectedness** as measured by the 'Inclusion of Nature in Self' scale.

The National Lottery Reaching Communities Fund has supported this programme.



Photo: Creating butterfly scallops at Moulden Hill, WWT

*"The Wellbeing Programme is different to other mental health groups, because you're outdoors and you can look at what's around you. We've helped nature, made a positive contribution, and it's been enjoyable."*

Swindon Wellbeing Programme participant



Photo: Cooking at Clouts Wood, WWT

## Youth Education and Wellbeing

Our Youth Education and Wellbeing Team have had a successful year engaging young people around the county through nature and improving their wellbeing:

- **More than 1,000 young people** have seen wellbeing benefits by taking part in regular forest school, supporting their resilience and helping to ensure they maintain their school placements. *"P had the best day surrounded by people who care for him. You are helping our boy heal and we are so grateful to you."* Carer
- We ran **12 family events**, encouraging over 260 children and 140 adults to engage with the natural world.
- Our school assemblies on waste and climate change inspired **510 students** to live more sustainably, and to reduce their waste and carbon footprints.
- We **trained 16 Forest School Leaders and delivered INSET training days with 30 teachers**, supporting them to improve their grounds for biodiversity and take their curriculum outside.



Photo: Level 3 Forest School Course group, Chris Found

More than **40 schools, youth groups and other organisations** took part in our environmental education programmes.

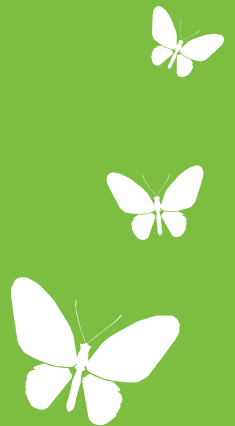


Photo: Stream dipping at Langford Lakes, Kelly Bridgen

*"The children and staff absolutely loved yesterday's workshop! They were so engaged and learned so much about British wildlife."*

Teacher, Amesbury Archer Primary



# The Care Farms

Our Care Farms are helping students who struggle in a traditional school setting to cope with emotional challenges, whilst building their confidence, independence and skill set through supervised nature-based activities.

In the last year, our Care Farms have worked with **119 children and young people** in nature and horticulture, helping **99 to retain their places at school**, with the remainder being home educated or on full-time alternative provision packages.

The Willows Care Farm has grown considerably, with more than 30 students attending each week. We built a new office and staffroom thanks to funding by Garfield Weston Foundation, and the old office has become an additional outdoor learning space, enabling us to support and nurture more children and young people in nature-based activities.

Other enhancements at our Care Farms included improvements to the animal enclosures, a new polytunnel and raised beds, which are already benefitting the animals and plants in our care.

*“The Willows Care Farm has been an exceptional support to our son who looks forward with enthusiasm to his Wednesday session. Promoting mental wellness, core life skills, social interactions, carpentry and outdoor projects could well lead to meaningful work for our son.”*

Care Farm student’s carer

Photo: The Willows bee keeping, Dean Sherwin



Photo: Lakeside student and pigs, Dean Sherwin

# UASC Programme

The Unaccompanied Asylum Seekers and Refugee Children Programme (UASC), commissioned by Wiltshire Council and launched in partnership with The Harbour Project in Swindon, delivered **six successful events and 38**

**activities for 55 young people** over the past year.

These activities give the young people a sense of belonging in the UK and help them overcome past trauma by providing opportunities to have fun and make new friends.

- A trip to Stourhead allowed participants to get involved in practical conservation tasks and learn about British born conservationists and Wiltshire history.
- An average of 15 refugees attended the Thursday football group each week. Yakob Adam Mohamed, an 18-year-old refugee from Sudan, was invited to a reception at the House of Commons by Swindon Town Football Club, which accepted an EFL award in recognition of their commitment to supporting refugees through the UASC programme.
- Other successful events included a BBQ Fun Day in Swindon and a beach trip to Weymouth.



Photo: Volunteering at Stourhead, WWT

*“I have enjoyed every trip, and I would like to do more, thank you for the opportunity to take part. Also, I have made new friends and I do keep in contact with them.”*

Azad Mahmoudi, programme participant

# Communications and campaigns

## Improved accessibility and engagement online

Immediately following the launch of our new website, **website visitors increased 48%** in March 2023 compared to the previous year and this trend has continued.

Website accessibility has improved, with more user-friendly membership and donation forms, easier navigation and various viewing options including dyslexia-friendly fonts and colour contrasts. Easy-read and visual pre-arrival guides have also been produced alongside video introductions for our most popular nature reserves, making them more accessible than ever before.

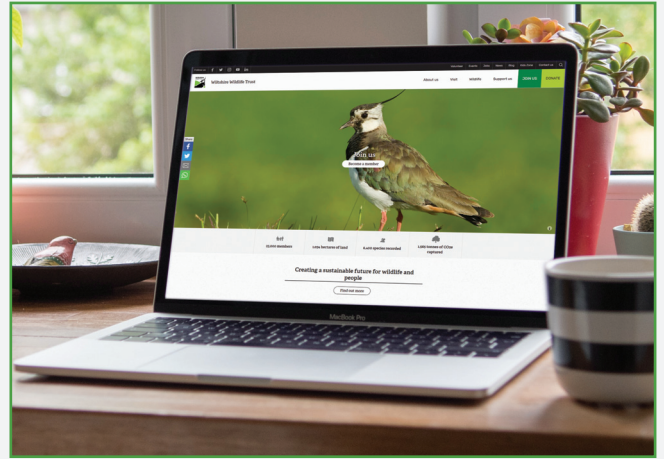


Photo: New website

## Media coverage

Media coverage of the Trust's campaigns, projects and sustainability messages **increased 29%** compared to the previous year, as we took a more proactive role in campaigning and highlighting the impact of our work. This included 45 radio and television appearances, such as an interview on BBC News about the importance of sustainable farming. This coverage helped to communicate how we are supporting nature's recovery and inspired more people to engage with nature, live more sustainably and support the Trust's work.



Photo: BBC interview at Blakehill Farm

## Defend Nature campaign

Our Defend Nature campaign was launched in autumn 2022 when the UK Government was proposing a 'sunset clause' on the Retained EU Law Bill by the end of 2023 that would have bulldozed hundreds of important environmental laws that protect wildlife and habitats.

As a result of our campaign, which was promoted heavily in the press, on social media and by email, **97 people in Wiltshire sent postcards to their MPs** demanding that they challenge the bill. Thanks to this support, we helped raise the alarm and the Government announced it would be scrapping the 'sunset clause'.



## 30 Days Wild campaign

30 Days Wild is the UK's biggest nature challenge run by The Wildlife Trusts and kindly supported by players of the People's Postcode Lottery. In June 2022, **1,458 individuals, 166 schools, 15 businesses and 10 care homes** took part across Wiltshire by doing one wild thing each day throughout the month to connect with nature.

## Waste Free February

In its sixth successful year, **164 people took part** in our Waste Free February campaign, reducing their waste throughout the month to help the environment.

This campaign attracted a lot of media coverage, including an interview on the BBC with one of our Young Ambassadors at the Melksham Community Larder.



Photo: Kody Bowler promoting Waste Free Feb on the BBC

Melksham Community Larder tries to tackle food waste

bbc.co.uk • 1 min read



### Limited waste

- 50% reduced to a black sack.
- 41% reduced to a carrier bag.
- 9% reduced to a jam jar.



### Changes made

- Meal planning
- Composting
- Buying loose goods



### Goals

- 44% achieved their goals
- 28% wasted less

# Carbon Footprint

The Trust recognises the threat to wildlife and people from climate change and is committed to being net carbon positive. This means minimising our emissions and optimising the carbon stored, captured and sequestered through land management of our nature reserves.

## Our calculations show that we continue to capture and store more carbon than we emit.

Accurate measurement is difficult and our calculations are based on the best available information. Each year, additional indirect sources of carbon emissions (known as Scope 3) have been included in the calculations. Even with these additions, during 2021-22\* we calculate that the Trust removed net 1,784 tonnes of carbon dioxide equivalent (t CO<sub>2</sub>e).

This was a significant increase compared to previous years, largely due to using improved data to calculate carbon exchanged on our nature reserves, but also in part thanks to the creation/extension of wet grassland nature reserves at Upper Minety Meadows and Bay Meadows, enabling us to capture more carbon year-on-year.

Emissions from conservation grazing livestock made up the majority of the Trust's carbon emissions: 65%. However these were down on previous years due to a reduced number of animals and more accurate categorisation. Questions have also been raised about whether the metrics widely used to convert methane emissions from livestock to carbon exaggerate their impact - we used the 'Farm Carbon Toolkit'.

Other emissions increased compared to the previous year. This is partly due to including more items within our Scope 3 calculations, but also because of the increased work carried out by the Trust. Wiltshire is a large county, therefore travel for work made up 26% while energy use was 7% of our emissions. Following the end of Covid restrictions, the Trust continued to support hybrid working to reduce the need for commuting.

To give an overall 'Carbon Footprint' for 2021-22, we calculated the carbon capture and sequestration rates that best matched the different habitats and management of our nature reserves, using a variety of sources and the lower rates where a range were identified for similar habitats.

## Which carbon emissions are used?

Resources included in this calculation are fossil fuels used in hand tools, small machinery and fleet vehicles, and electricity usage. Emissions from the following are also included: livestock, waste and recycling, water used and sewerage at sites without treatment facilities, staff travel, commuting and working from home, volunteer travel, transmission and distribution of grid electricity and emissions which come from extracting, refining and transporting fossil fuel before we use it.

## Looking ahead

Annual action plans will enable us identify opportunities to reduce our carbon emissions further in key areas. Our staff and volunteer Sustainability & Carbon Reduction Group is helping to put these plans into action.

Read more about how we calculate our carbon footprint at: [www.wiltshirewildlife.org/carbon-footprint](http://www.wiltshirewildlife.org/carbon-footprint)

\*Our carbon footprint reporting period is aligned to The Wildlife Trusts

## Wiltshire Wildlife Trust's carbon footprint

	2019 - 2020 Tonnes CO <sub>2</sub> e (Carbon Dioxide equivalent)	2020 - 2021 Tonnes CO <sub>2</sub> e (Carbon Dioxide equivalent)	2021 - 2022 Tonnes CO <sub>2</sub> e (Carbon Dioxide equivalent)
Emissions from operations	234	215	244
Emissions from livestock	801	823	462
<b>Total emissions</b>	<b>1,035</b>	<b>1,038</b>	<b>706</b>
Carbon flux (minimum carbon exchanged by nature reserves)	-1,419	-1,565	-2,490
<b>Carbon footprint (balance of carbon emissions and carbon captured)</b>	<b>-384</b>	<b>-527</b>	<b>-1,784</b>
Emissions avoided by purchase of 100% renewable energy (wind and hydro)	26	20	28
Emissions avoided by generation of renewable energy by WWCE	1,513	1,371	1,259
<b>Total emissions avoided</b>	<b>1,539</b>	<b>1,391</b>	<b>1,287</b>

## Emissions from operations (excluding livestock):



# Independent auditors' statement to the members of Wiltshire Wildlife Trust Limited

We have examined the summarised financial statements for the year ended 31 March 2023.

## Respective responsibilities of the trustees and the auditor

The trustees are responsible for preparing full annual financial statements in accordance with the recommendations of the Charities Statement of Recommended Practice (SORP) 2019 (FRS 102) and for extracting information from the full annual financial statements into the summarised financial statements.

Our responsibility is to report to you our opinion on the consistency of the summarised financial statements with the full annual financial statements and the Trustees' Impact Report. We also read the other information contained in the Impact Report and consider the implications for our report if we become aware of any apparent misstatements or material inconsistencies with the summarised financial statements.

## Basis of opinion

We conducted our work in accordance with guidance issued by the Auditing Practices Board.

## Opinion

In our opinion the summarised financial statements are consistent with the full annual financial statements and the Trustees' Annual Report of Wiltshire Wildlife Trust Limited for the year ended 31 March 2023.

Sumer Auditco Ltd  
Statutory Auditor  
County Gate  
County Way, Trowbridge  
Wiltshire BA14 7FJ



## Balance Sheet as at 31 March 2023

	Group		Charity	
	2023 £	2022 £	2023 £	2022 £
<b>Fixed Assets</b>				
Tangible assets	2,517,121	2,551,053	2,517,121	2,551,053
Heritage assets	9,073,253	7,373,253	9,073,253	7,373,253
Investments	358,322	383,866	368,322	393,866
Mixed motive investments - properties	2,876,580	2,698,991	2,876,580	2,698,991
	<b>14,825,276</b>	<b>13,007,163</b>	<b>14,835,276</b>	<b>13,017,163</b>
<b>Current Assets</b>				
Stocks and work in progress	199,420	194,725	199,420	194,725
Debtors	1,047,244	1,204,558	1,047,270	1,204,169
Cash at bank and in hand	1,764,471	1,688,169	1,744,222	1,667,133
	<b>3,011,135</b>	<b>3,087,452</b>	<b>2,990,912</b>	<b>3,066,027</b>
<b>Creditors: Amounts falling due within one year</b>	(303,107)	(249,169)	(302,947)	(248,569)
<b>Net current assets</b>	<b>2,708,028</b>	<b>2,838,283</b>	<b>2,687,965</b>	<b>2,817,458</b>
<b>Total assets less current liabilities</b>	17,533,304	15,845,446	17,523,241	15,834,621
<b>Creditors: Amounts falling due after more than one year</b>	(40,529)	(50,086)	(40,529)	(50,086)
<b>Total net assets</b>	<b>17,492,775</b>	<b>15,795,360</b>	<b>17,482,712</b>	<b>15,784,535</b>
<b>Charity Funds</b>				
<b>Capital Fund</b>				
Restricted nature reserves	10,496,081	8,832,671	10,496,081	8,832,671
<b>Other Funds</b>				
Restricted funds	1,062,766	772,865	1,062,776	772,865
Unrestricted funds				
General funds	1,543,585	1,759,893	1,533,522	1,749,068
Designated capital funds	2,876,580	2,698,991	2,876,580	2,698,991
Designated other funds	1,513,763	1,730,940	1,513,763	1,730,940
	<b>17,492,775</b>	<b>15,795,360</b>	<b>17,482,712</b>	<b>15,784,535</b>

## Financial summary 2023

For the year ended 31 March 2023, the Consolidated Statement of Financial Activities (SOFA) shows total income of £7,120,717, revenue expenditure of £5,575,347 and gains on investments of £152,045, resulting in a net movement in funds of £1,697,415.

During the year, the balance sheet increased with total net assets in excess of £17.4 million, with the acquisition of Great Wood.

At the year end, the Trust maintains a strong cash position with significant funds held for Restricted projects. Unrestricted funds remain healthy and ensure the Trust is well placed to deliver our 2030 Strategy by providing leadership to drive nature's recovery, connecting all generations with nature and empowering them to take meaningful action for nature and the climate.



## Peter Luck

Treasurer, Wiltshire Wildlife Trust Limited

## Trustees' Statement

The Summary Financial Statement is only a summary of the information in the Trust's full annual financial statements (on which the auditors gave an unqualified report) and may not contain sufficient information to allow for a full understanding of the financial affairs of the charity. The Trustees' Annual Report does not form part of the annual financial statements and no information from the Trustees' Annual Report is included in this summary.

The full statutory financial statements, including the Trustees' Annual Report and the unqualified auditors' report, can be obtained from Wiltshire Wildlife Trust, Elm Tree Court, Long Street, Devizes, Wiltshire, SN10 1NJ. A member wishing to receive full financial statements and reports in place of summary financial statements can request these in writing to the company secretary at the above address. The full financial statements were approved on 23 August 2023 and will be submitted to the Charity Commission in the near future.



**Mark Street**  
Chairman, Wiltshire Wildlife Trust Limited

## Consolidated Statement of Financial Activities (including income and expenditure account) for the year ended 31 March 2023

	Unrestricted funds £	Restricted funds £	Year ended 31.3.23 £	Year ended 31.3.22 £
<b>Income from:</b>				
Donations and legacies (including membership income and GiftAid)	824,401	16,855	841,256	1,609,458
Charitable activities	2,187,106	3,769,736	5,956,842	3,709,713
Other trading activities	197,315	50	197,365	127,235
Investments	97,533	-	97,533	95,843
Other	27,721	-	27,721	29,567
<b>Total income</b>	<b>3,334,076</b>	<b>3,786,641</b>	<b>7,120,717</b>	<b>5,571,816</b>
<b>Expenditure on:</b>				
<b>Raising funds</b>				
Recruiting new members	151,514	-	151,514	182,481
Fundraising, donations and legacies	113,541	-	113,541	83,619
<b>Charitable activities</b>				
Creating living landscapes across Wiltshire	1,254,591	1,334,862	2,589,453	1,810,325
Leading and supporting the transition of society towards more sustainable living	1,916,489	261,377	2,177,866	1,901,097
Ensuring our work is based on sound knowledge and evidence	91,755	206,541	298,296	166,743
Support of members	244,677	-	244,677	247,347
<b>Total expenditure</b>	<b>3,772,567</b>	<b>1,802,780</b>	<b>5,575,347</b>	<b>4,391,612</b>
Net gains/(loss) on investments	152,045	-	152,045	276,807
<b>Net income/(expenditure)</b>	<b>(286,446)</b>	<b>1,983,861</b>	<b>1,697,415</b>	<b>1,457,011</b>
Transfers between funds	30,550	(30,550)	-	-
<b>Net movement in funds</b>	<b>(255,896)</b>	<b>1,953,311</b>	<b>1,697,415</b>	<b>1,457,011</b>
<b>Reconciliation of funds:</b>				
Total funds brought forward:				
As previously reported	3,981,994	11,813,366	15,795,360	14,338,349
Prior year adjustment	2,207,830	(2,207,830)	-	-
As restated	6,189,824	9,605,536	15,795,360	14,338,349
<b>Total funds carried forward</b>	<b>5,933,928</b>	<b>11,558,847</b>	<b>17,492,775</b>	<b>15,795,360</b>

The statement of financial activities contains all gains and losses recognised during the year. All income and expenditure derive from continuing activities.

## Where our money comes from 2023 **£7,120,717**

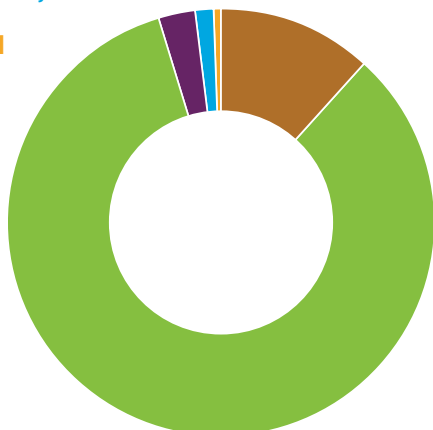
Donations and Legacies **£841,256**

Charitable Activities **£5,956,842**

Other Trading Activities **£197,365**

Investments **£97,533**

Other **£27,721**



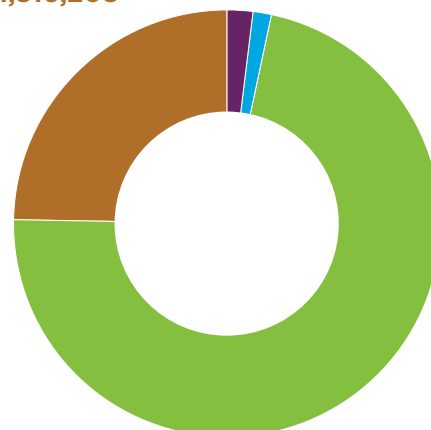
## Where we spend our money 2023 **£7,391,555**

Raising Funds: Recruiting New Members **£151,514**

Raising funds: Fundraising, Donations & Legacies **£113,541**

Charitable Activities **£5,310,292**

Capital Acquisitions **£1,816,208**



# Leave a lasting gift for wildlife

Wiltshire Wildlife Trust is partnering with Wiltshire based solicitors Batt Broadbent to offer a new Free Wills Service:

- You can have a simple will written or updated for free
- You can protect your loved ones
- You can remember the people and causes you care most about

Get in touch with our Fundraising Team to find out more:  
[fundraising@wiltshirewildlife.org](mailto:fundraising@wiltshirewildlife.org)



## With thanks to our funders and corporate members

### Donors, fundraisers and corporate members:

Andover & District Dog Training  
Animal & Plant Health Agency  
Animal Friends  
Avon Wildlife Trust  
Biffa Award  
Challenge Sustainability Ltd  
Corsham Gardener's Society  
Crapper & Sons Landfill Limited  
Crest Nicholson  
Defence Infrastructure Organisation  
Department for Environment, Food & Rural Affairs  
Department for Work and Pensions  
Dorset Wildlife Trust  
Ecolibrium Environmental Contracting  
Energy Savings Experts Ltd  
Environment Agency  
European Social Fund  
Forestry England  
Founders Pledge Grant - Neal Gandhi  
Garfield Weston Foundation  
Green Recovery Challenge Fund  
Green Square Accord  
Historic England  
Inchcape Foundation  
JMH Farming & Renewables Ltd  
John Miller (Corsham) Ltd  
Jordan Ayres  
Just Giving - Professor Simon Olding's Retirement  
Knorr-Bremse Rail Systems (UK) Ltd  
Laurie Lovelace  
Malaby Biogas  
Mark Lovelace  
Melanie Vincent  
Mirage Signs Ltd  
National Highways  
National Lottery Community Fund  
National Lottery Heritage Fund  
Natural England  
New Forest National Park Authority

North Wessex Downs AONB  
Persimmon Plc  
PJF Storrs Charitable Trust  
PKA Architects Limited  
Platinum Motor Group  
Procol Ltd  
QinetiQ  
Quartet Community Foundation  
Quick Move Now  
Rural Payments Agency  
Salisbury Cathedral Forum  
Salisbury City Council  
Science Museum Group Wroughton  
Scott Eredine Trust  
Shaw Trust  
Swindon Borough Council  
Thames Water Utilities Ltd  
The Big Give  
The Environment Agency  
The Hills Group  
The Travel Chapter Ltd  
The Tree Council  
The Underwood Trust  
The Wildlife Trusts  
Verdon-Smith Family Charitable Trust  
Vine House Farm  
Waitrose Limited  
Wessex Rivers Trust  
Wessex Water Services Ltd  
Wild Trout Trust  
Wilton Estate  
Wiltshire Council  
Wiltshire Wildlife Community Energy Ltd  
Woodland Trust

### Wildlife Guardians:

Mr Denis Gamberoni  
Mr James Robertson  
Mr John Pilkington  
Mr Michael Percival  
Ms Nelly Thelwall  
Mr Peter Luck  
Mr & Mrs Parker

We are grateful to those who have chosen to support Wiltshire Wildlife Trust with a special gift in their wills or in memoriam during 2022-23.

### Legacies and In Memory gifts received from or on behalf of:

Anne Booth  
Carmine Di Meola  
Christine Rolt  
David Moore  
Dorothy Rogers  
Evelyn Bunce  
Glendon R Davis  
Hildegard Johanna Hertz  
James Stewart  
Jeanne Yeates  
Jennifer May Warne  
Jeremy Booth  
John Leslie Presland  
Kenneth Gordon Hayes  
Krista Reddell  
Lillian Bainton  
Margaret Kerr  
Margaret Smale  
Mary Woodward  
Mike Howarth  
Mr and Mr Allen  
Nigel Sartin  
Philip Regan  
Richard Savage  
Robert and Barbra Vine  
Robert Hinkel  
Ron Neal  
Rosina Ashman  
Sandra Archer  
Sandra Helen Davis  
Susan Anne Henshaw  
Tim Davies  
Valerie Patricia Edwards

[www.wiltshirewildlife.org](http://www.wiltshirewildlife.org)

Registered Charity Number 266202 Company Registration Number 730536

Registered Office Elm Tree Court, Long Street, Devizes, Wiltshire SN10 1NJ

Telephone 01380 725670