



March 2025- Volume 15

www.wiltshirewildlife.org/learning/care-farms

Welcome to 2025



From flooding, mud and wading in wellies to frozen ground, icy lakes, hot water bottles, hot chocolate and creative ice harvesting challenges, this term has been all about working with the weather.



What's New?

Lakeside

As the season changes some of our students have enjoyed management tasks around the site, coppicing the willow, creating a dead hedge boundary, hurdle making, and ongoing maintenance of buildings, boundaries, ditches and paths.

Some of WWT's flock of Herdwick sheep have been grazing the orchard at Lakeside, so students and staff built tree guards to protect the fruit trees from unwanted pruning. Visiting and feeding the sheep has been popular and has continued now that they have moved to graze on the other side of the lake.

The RSPB Big Garden Bird watch in February saw staff and students with binoculars and record sheets take part in a group walk spotting tracks in the plentiful mud, movement in the trees and listening for birdsong.

On those cold, wet days, when the outdoors isn't as welcoming, some brilliant clay models have been created in The View.



The Willows

The students had a great time in December getting into the Christmas spirit; they made some fabulous decorations. Bob the Scarecrow even had a visit from Santa's Elves!

We recently received funding for an outdoor shelter to expand our offer to young people with sensory needs.

This funding came from Wiltshire Council's SEND Small Grants Scheme. This has now been built and offers cover for our Water Wall.

In preparation for spring the students have been busy building planters and they will all be planning what they are going to grow in them over the coming weeks.

A few of our students have spent the winter bird watching, identifying and photographing the different birds visiting The Willows.

Finally Darwin, Truffles and Twiggy have been making the most of their new hard standing area. They have been able to enjoy lots of attention and grooming from the students no matter the weather!



Down on the Farm...

Catching up with Nick from Lakeside



What do you enjoy about the Care Farm?

I enjoy doing jobs at Lakeside. I have cleared the ditches with waders on and cut down willow.

How does it make you feel coming to the farm?

I get a good day out. It makes me feel happy.

What new skills have you been learning?

How to mend and repair things around the site, like the wheelbarrows. How to grow things. I have a plot in the polytunnel with six strawberries

'Comic Club' at The Willows

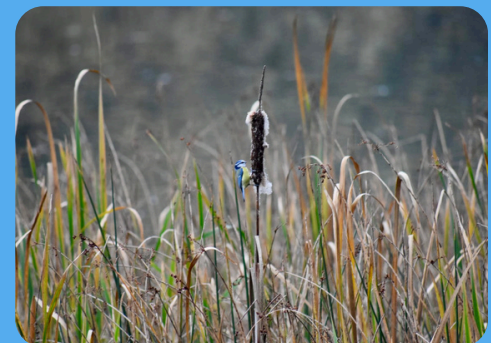
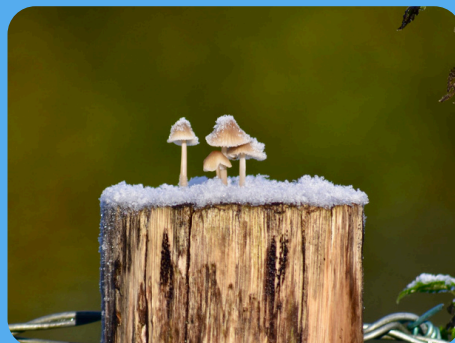
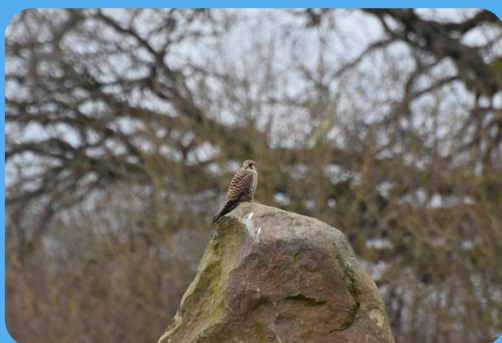
One of our students created a comic book inspired by nature. We did not know it at the time but this was the humble beginnings of 'Comic Club'.

The book soon grew into a series with the student showing great imagination and expression of creativity.

After seeing the comics other students gained interest and also started producing comics and this is how Comic Club was formed. They meet weekly and it allows them to have positive social interactions and through successful communication and collaboration the club is going from strength to strength.



Nature photography by our students



Contact us

Dean Sherwin
deans@wiltshirewildlife.org
07887 758380



Social Farms & Gardens



Meeting the care farming Code of Practice

Follow us

www.facebook.com/WiltsWild
www.instagram.com/wiltswildlife

